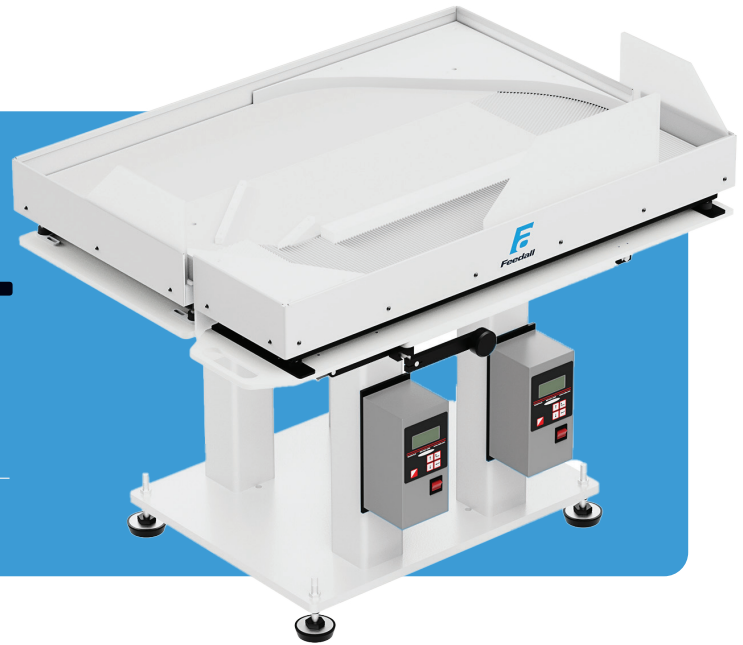


## FEEDALL FLEX 3042

# The largest flex feeder for MAXIMUM ROBOT CONSUMPTION.

*Ideal for parts from 10 to 350 mm (0.4 - 14 in) in size*



Handling the largest parts and heaviest loads, the Feedall Flex 3042 maximizes capacity and capability. The extra-large footprint offers the flexibility to engineer unique solutions to feed your biggest robots. Offering the largest payload capacity of 20.0 kg (44.1 lbs), it's American-made for the hungriest robots.

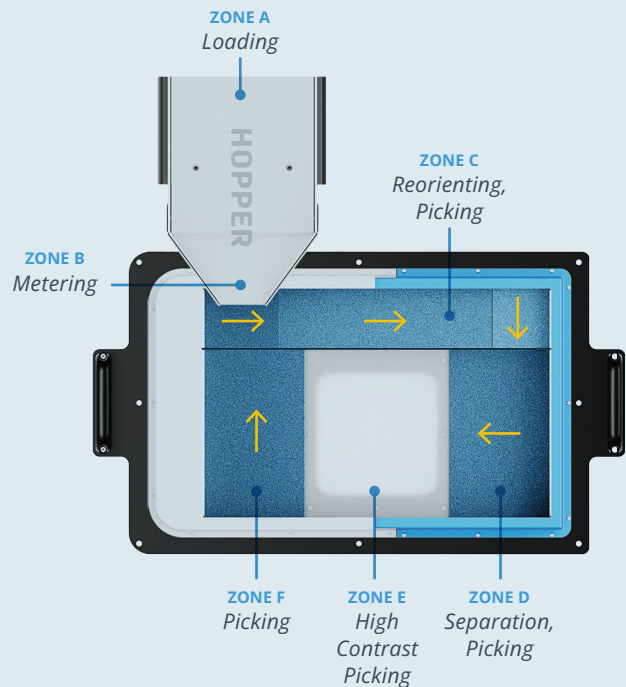
### WHY FEEDALL FLEX FEEDERS

#### Vs. Bin Picking:

- Requires more economical 2D vision camera
- Simplified programming and setup time
- Predictable cycle times and feed rates
- Provides part separation and orientation for increased pickability

#### Vs. Others:

- Largest pickable area in the industry
- Handles the heaviest parts
- Provides superior part control for face selection and orientation
- Features an integrated stabilization plate
- Ensures American-made quality and lead-times



### HOW IT FEEDS

A vibrating table recirculates and separates parts around the 30" x 42" picking zone. The feeder cycles on and off, allowing your vision system to capture an image, locate pickable parts, and retrieve them with the robot. Bon appétit.



### CONTACT

Feedall Automation  
38379 Pelton Road  
Willoughby, Ohio 44094  
sales@feedall.com  
1-800-942-8101



LEARN MORE



GET A QUOTE

**DIMENSIONS**

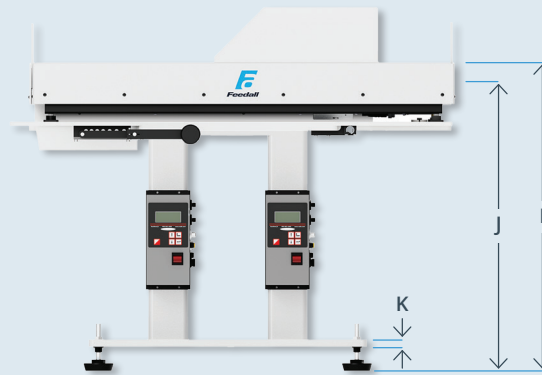
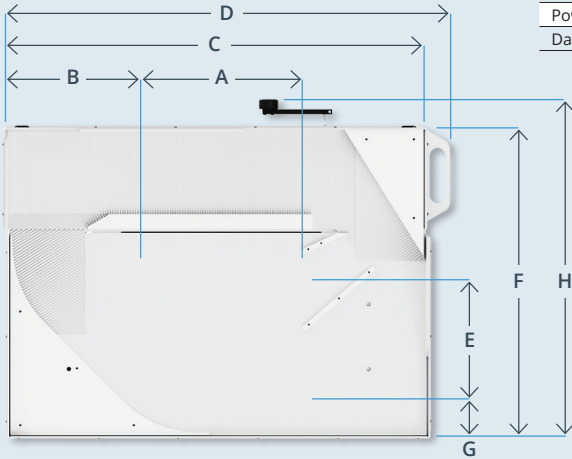
<b>A</b>	450 mm	17.7 in	<b>G</b>	54 mm	2.1 in
<b>B</b>	339 mm	13.3 in	<b>H</b>	851 mm	33.5 in
<b>C</b>	1,067 mm	42.0 in	<b>I</b>	711 mm	28.0 in
<b>D</b>	1,156 mm	45.5 in	<b>J (pick)</b>	660 mm	26.0 in
<b>E</b>	400 mm	15.7 in	<b>K</b>	13 mm	0.5 in
<b>F</b>	762 mm	30.0 in			

**SPECIFICATIONS**

Dimension of parts	10 - 350 mm	0.4 - 14 in
Pick area	812,902 mm <sup>2</sup>	1,260 in <sup>2</sup>
Diagonal	1,311 mm	51.6 in
Backlit area	92,903 mm <sup>2</sup>	144 in <sup>2</sup>
Max payload	20.0 kg	44.1 lb
Max part weight	1,200 g	2.64 lb
Overall dimensions	838 mm x 1,168 mm	33 x 46 in
Pick depth	65 mm	2.6 in
Power demand	110VAC (4A) / 24VDC	
Data connections	M12	

**HOPPER OPTIONS**

2.0 CU FT (57 Liters)
4.0 CU FT (113 Liters)
Side Load
Front Load
Metering Control



**CHOOSE THE KIT FOR YOUR ROBOT-NOSHING NEEDS**

Despite its extra-large size, the Feedall Flex 3042 can be implemented as a table-top piece or installed as a standalone unit with its own pedestal-style stand. We've customized three product bundles to accommodate different needs:

	✓ Coil Controls	✓ Coil Sensors	2D Camera	3D Camera	I/O Block	Robot Guidance
Complicated Part Geometries			Complex			Simple
Easy to Integrate			Difficult			Easy
Pick Speed			Slow			Fast
Affordability			Expensive			Economical

**Basic Bundle**

For system integrators or end-users who want to integrate the controls and vision themselves

	✓ Coil Controls	✓ Coil Sensors	✓ 2D Camera	3D Camera	✓ I/O Block	✓ Robot Guidance
Complicated Part Geometries						Simple
Easy to Integrate						Easy
Pick Speed						Fast
Affordability						Economical

**MOST POPULAR**

**Plug-and-Play Bundle**

For the simplest integration and user experience

	✓ Coil Controls	✓ Coil Sensors	2D Camera	✓ 3D Camera	✓ I/O Block	✓ Robot Guidance
Complicated Part Geometries						Simple
Easy to Integrate						Easy
Pick Speed						Fast
Affordability						Economical

**Advanced Guidance Bundle**

Only required for the most complex parts with multiple pickable features and orientations

**HIGH-PERFORMANCE FEATURES WITH A SIDE OF ACCESSORIES:**

All Feedall Flex Feeders offer built-in features and options to help you streamline operations and maximize throughput.

**Standard Features**

- Heavy-duty construction
- Coil Monitoring Sensors
- Lifting handles
- Sturdy stabilization plate
- Powder-coated finish

**Optional Accessories**

- Guide Eye Camera and Controls
- Removable airbox for detangling parts
- Integrated LED backlight
- Gentle part flipping fixtures
- Various hoppers for part metering
- Camera mounting fixture
- Surface kits for part control
- Fabricated cart



**ABOUT FEEDALL**

Feedall Automation was founded in 1946 with the goal of helping companies achieve higher production rates. Since then, we've honed our reputation as pioneers and innovators providing part feeding, material handling solutions, and equipment that optimize robot performance.

over **22,000** orders

over **2,000** happy customers

over **75** years in business